

# BASIC VALVE VICTAULIC METAL



## Applications

Hydraulic valves for irrigation purposes, potable water distribution and industrial processes.

## Useful functions

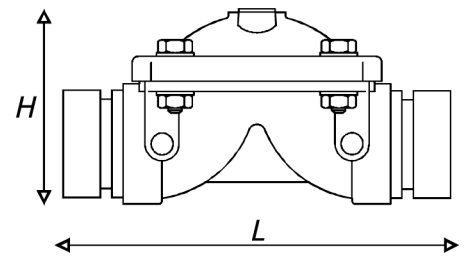
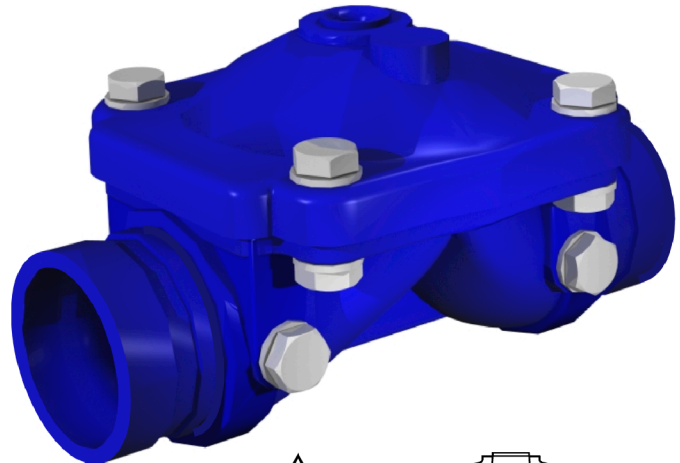
Electric valve	Level control (float valve)
Pressure reducing	Flow control
Pressure sustaining	Security valve

## Advantages

Low pressure losses  
Easy maintenance  
Slow opening and closing to avoid hydraulic ham

## Technical features

Material body and cover: Cast iron GG25  
Coating: Powder polyester  
Diaphragm: Natural rubber (NR), (EPDM, VITON option)  
Spring: Stainless steel AISI 304, (AISI 316 option)  
VICTAULIC: 2", 3" and 4"  
Max working pressure: 16 bar



## MINIMUM WORKING PRESSURE

VALVE	low press.	high press.
2"	0,3	0,7
3"	0,5	0,9
4"	0,5	1,0

## DIMENSIONS

Code	Valve	L	H	W	kg.
892420	2"	203	113	128	3,6
892430	3"	231	150	172	7,3
892440	4"	283	185	204	11,5

codes for high pressure diaphragm AP, for low pressure diaphragm BP please consult

## HEAD LOSS, FULLY OPENED VALVE (M).

Flow (m3/h)	5	10	15	20	25	30	35	40	45	50	55	60	65	70	80	90	100	125	150
2"	<b>0,08</b>	<b>0,35</b>	<b>0,82</b>	<b>1,50</b>	<b>2,40</b>	<b>3,51</b>	4,85	6,42	8,22	10,25									
3"	<b>0,04</b>	<b>0,12</b>	<b>0,25</b>	<b>0,44</b>	<b>0,68</b>	<b>0,97</b>	<b>1,31</b>	<b>1,70</b>	<b>2,13</b>	<b>2,62</b>	<b>3,15</b>	<b>3,73</b>	4,35	5,03	6,51	8,18	9,08	10,03	
4"	<b>0,03</b>	<b>0,11</b>	<b>0,22</b>	<b>0,35</b>	<b>0,50</b>	<b>0,68</b>	<b>0,88</b>	<b>1,09</b>	<b>1,33</b>	<b>1,58</b>	<b>1,85</b>	<b>2,13</b>	<b>2,43</b>	<b>2,75</b>	<b>3,42</b>	4,16	4,95	7,15	9,66

\*Bold: advised flow rates